



BY THE C

IN THE HEART OF **LARNACA**

*Discover the Allure
of Enchanting Cyprus*



1 GEOGRAPHICAL BEAUTY:
Located in the heart of the Mediterranean

2 STRATEGIC LOCATION:
Crossroads of Europe, Asia, and Africa
Attracts investors seeking a unique and diverse landscape

3 HOSPITALITY AND CHARM:
Known for warm hospitality
Invites exploration of tradition and modernity

4 ECONOMIC STRENGTH:
Boasts a robust economy
Serves as a strategic hub for international business



LARNACA

*Where Relaxation
Meets Modern Living*

COASTAL SERENITY:

Located on the southern shores of Cyprus
Perfect mix of tranquility and contemporary lifestyle

NATURAL DELIGHTS:

Sunny beaches, clear waters, and golden sands
Ideal spot for leisure and relaxation

RICH CULTURAL HERITAGE:

Steeped in history
Landmarks like Larnaca Castle, Larnaca Salt Lake, Finikoudes Promenade and many more

4 AIRPORT ACCESS:

Easy access to the airport, ensuring seamless travel for residents.

PRIME LOCATION



Thermopilon street Larnaca

Located in the center of the town



3 minutes' walk from the beach
and restaurants of Finikoudes



1 minute walk from the shopping
and restaurants of Ermou



3 km away from Mackenzi

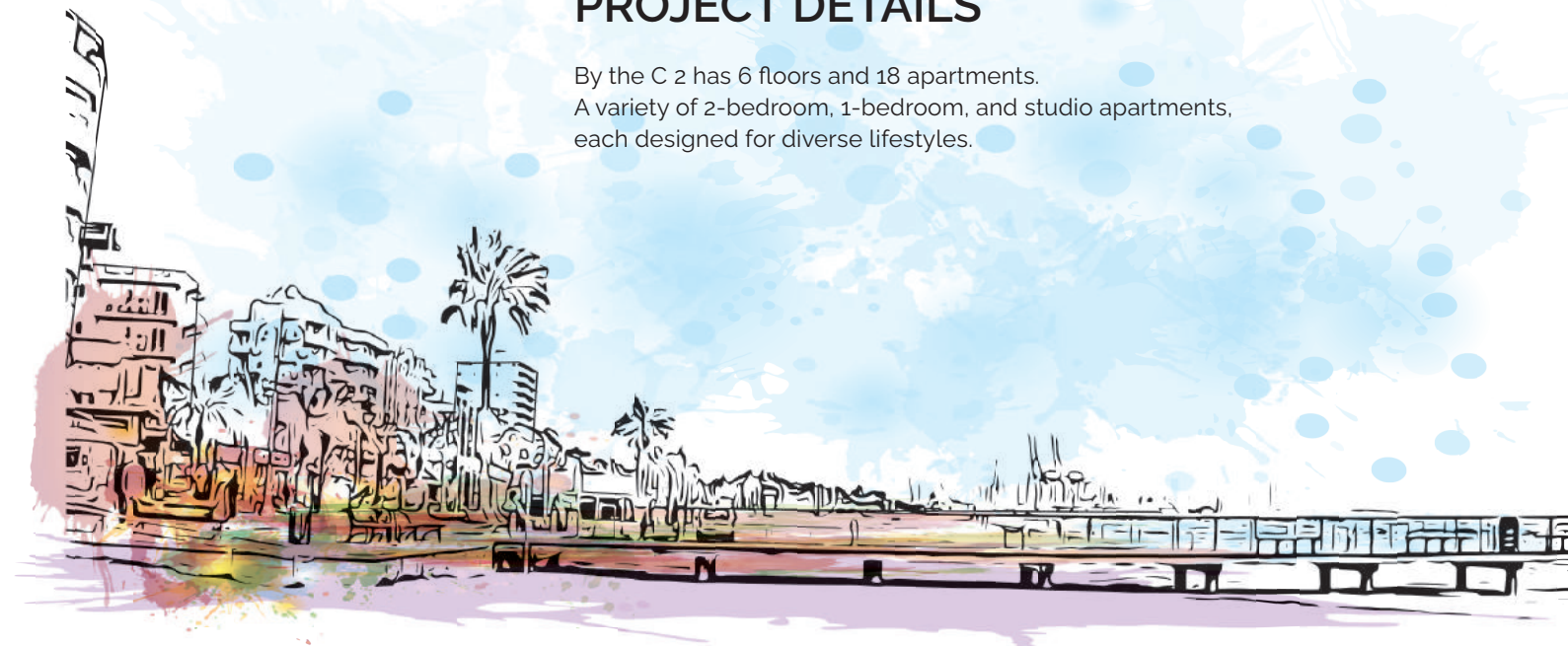


9 km away from airport



PROJECT DETAILS

By the C 2 has 6 floors and 18 apartments.
A variety of 2-bedroom, 1-bedroom, and studio apartments,
each designed for diverse lifestyles.



BY
THE
C2
IN THE HEART OF LARNACA

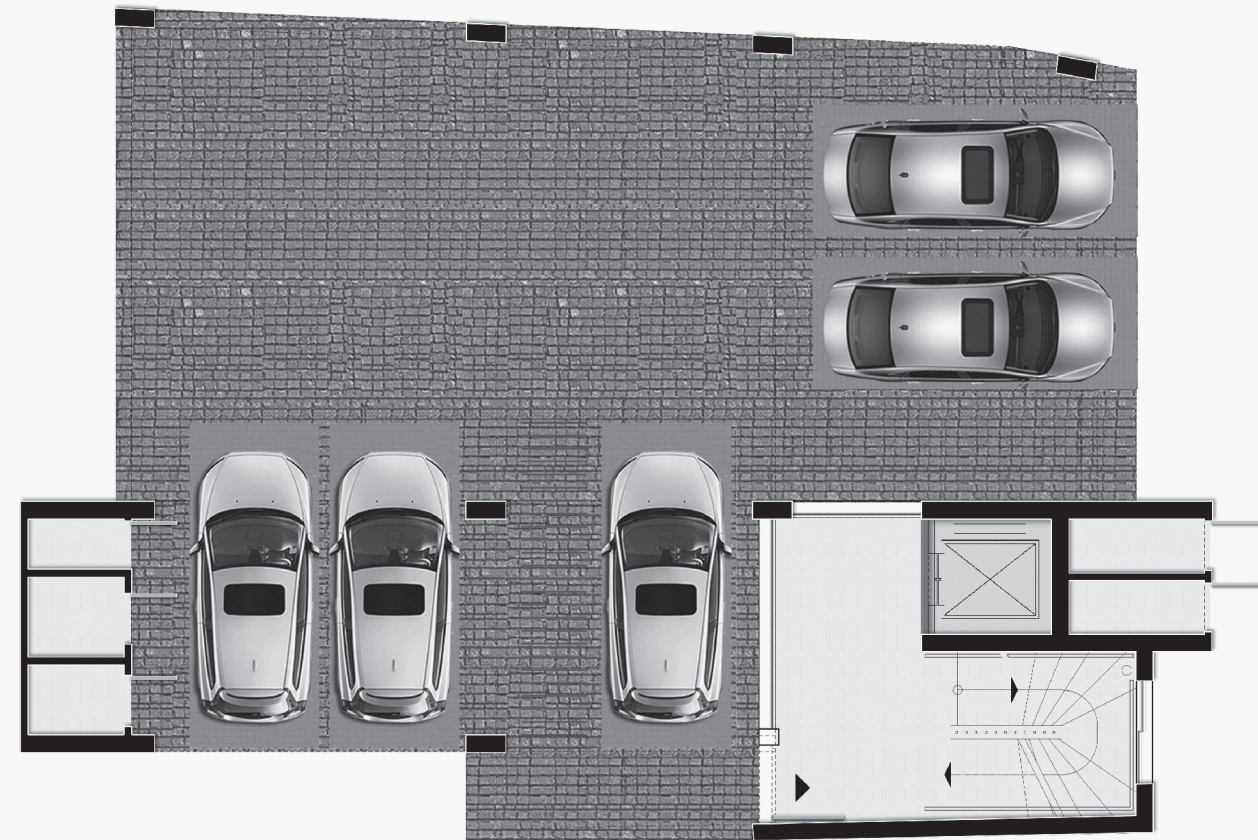


BY
THE
C2
IN THE HEART OF LARNACA





■ PARKING



■ TYPICAL FLOOR



■ SIXTH FLOOR



■ ROOF





DEVELOPERS



For further inquiries and to seize your opportunity in our exclusive Larnaca project, feel free to reach us:

Ermou 41, 6023, Larnaca, Cyprus

salescy@investorsgrouplb.com

+357 96 888 060

sales@investorsgrouplb.com

+961 3 453 222

www.investorsgrouplb.com

@ investorsgrouplb

f Investors Group LB

*BY
THE*
C2
IN THE HEART OF **LARNACA**