

LARNACA
MARINA

FINIKOUEDES
BEACH

● ENCHANTING GEOGRAPHICAL NEXUS

Cyprus, a fascinating island placed at the crossroads of Europe, Asia, and Africa, beckons investors with its captivating location.

● ROBUST RENTAL MARKET

Cyprus orchestrates a symphony of a flourishing rental market, where your real estate investments can become melodious cash-flow generators.

● MAGIC KEYS TO CITIZENSHIP

Unlock the key to citizenship in Cyprus through the alchemy of real estate investment.

● QUALITY OF LIFE

The island offers a pleasant Mediterranean climate, beautiful beaches, and a relaxed lifestyle. It is known for its safety and comfortable living environment.

● CAPITAL APPRECIATION POTENTIAL

Over the years, Cyprus has witnessed steady growth in property values. The ongoing development projects and infrastructure improvements in Cyprus further contribute to the long-term growth prospects.



LARNACA CENTER

Larnaca is a popular tourist destination, attracting visitors from around the world. By investing in the center, you tap into the lucrative tourism market, offering the potential for high rental demand, especially during peak seasons. Living in Larnaca Center means having a plethora of amenities at your doorstep. From trendy cafes and restaurants to boutique shops and local markets, the area offers a diverse range of options to cater to various lifestyles and preferences.

Larnaca international airports connect the area to international destinations and the Larnaca Marina project will bring several added values to the city, especially to the property value in the surroundings of the Marina.



PRIME LOCATION



Lordou Vyrona 60-32, Larnaca, Cyprus

Located in the center of the town.



4-minute walk from the shopping and restaurants of Ermou



7-minute walk from the beach and restaurants of Finikoudes



10-min walk from Larnaca New Marina



3 km away from Mackenzi



6 km away from airport



C SIDE PROJECT DETAILS

The Building has 2 commercial spaces in Gf and mezzanine level and 20 apartments on 5 floors and roof terrace as follow;
15 studios (type A & B) and 4 two bedrooms apartments
+ 1 two bedrooms penthouse.

The studios consist of an open space living room and kitchen;
1 bathroom and 1 balcony.

The two bedroom apartments consist of an open space living room and kitchen; 2 bedrooms and 2 bathrooms and a balcony and roof top terraces for the penthouse.



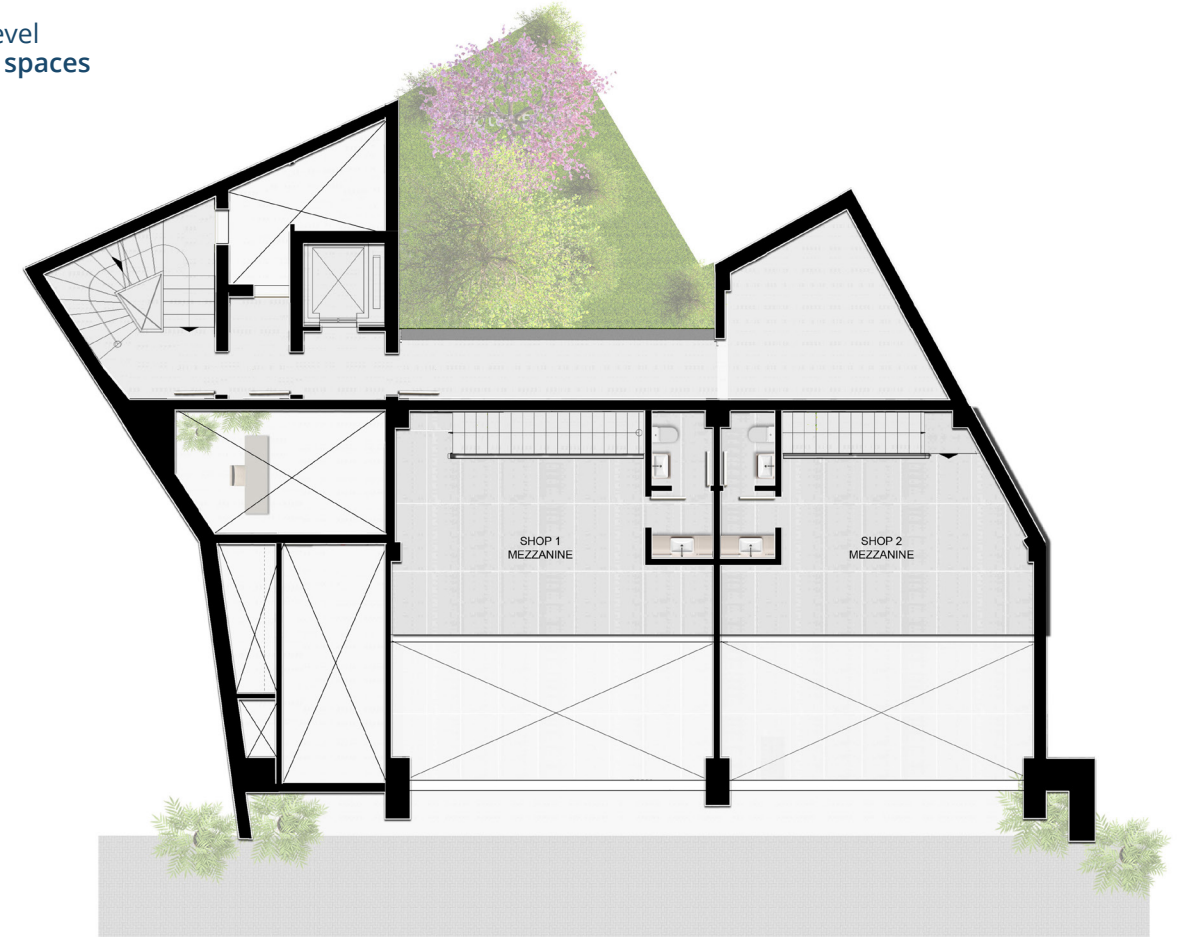




- Ground floor level
Entrance lobby and
commercial spaces



- Mezzanine level
Commercial spaces



■ Typical floors
F1-F2-F3-F4



■ Typical floors
F5



- Typical floors
- Roof Floor



DEVELOPERS

Investors Group
Real Estate Development

For further inquiries and to seize your opportunity in our exclusive Larnaca project, feel free to reach us:

Ermou 41, 6023, Larnaca, Cyprus

salescy@investorsgrouplb.com

+357 96 888 060

sales@investorsgrouplb.com

+961 3 453 222

www.investorsgrouplb.com

 *[investorsgrouplb](https://www.instagram.com/investorsgrouplb)*

 *[Investors Group LB](https://www.facebook.com/InvestorsGroupLB)*



 Investors Group
Real Estate Development